

EU Type Examination Certificate Number: **0120/SGS0514**

**Lettel**

36 rue de Picpus 75012 Paris France

Instrument Identification:  
**MCT4-463M; MCT4-463TM**

**Multi-phase, Active Import/Export kWh, Direct Connected, Smart, Electricity Meter**

Instrument Traceable Number  
**0120/SGS0514**

has been assessed and certified as meeting the requirements of

**EU Directive 2014/32/EU**  
on Measuring Instruments Annex II, Module B

It is certified that the manufacturer's technical design and specimen for the above instrument has been examined and, based on the evidence submitted, it is considered that the instrument conforms to the requirements of Annex V of EU Directive 2014/32/EU

This certificate must be used in conjunction with a certificate covering the product verification as required in Annex II, Module D or Annex II, Module F

This certificate is valid from 21 September 2021 until 27<sup>th</sup> March 2030  
Issue 1

Certification is based on report number(s) SHES 180901038101 dated 27<sup>th</sup> March 2020, EMA27599/1/TR50579 dated 23<sup>rd</sup> March 2020  
EMA27599/1; EMA295239/1

Authorised Signature



Tom Törn

SGS Fimko OY, Notified Body 0598  
Takomitie 8, FI-00390 Helsinki, Finland  
t +358 9 6963 61 [www.sgs.fi](http://www.sgs.fi)



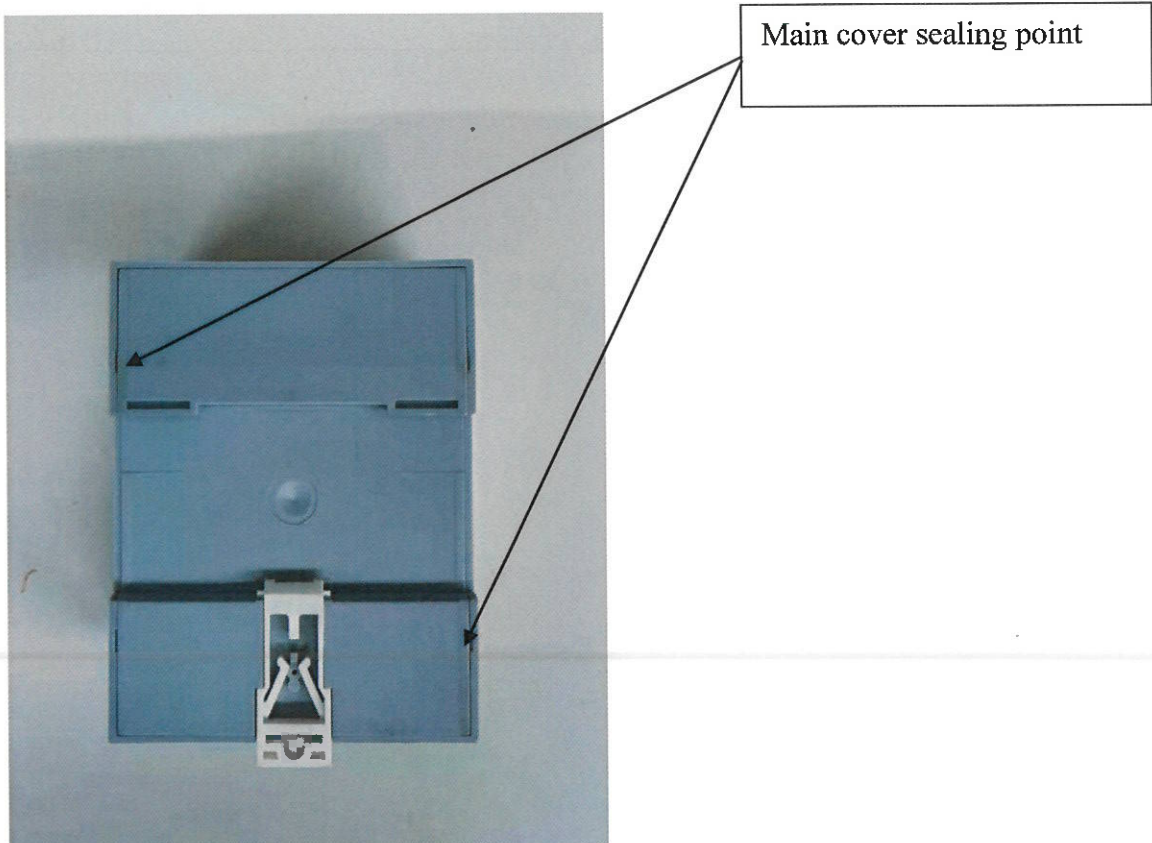
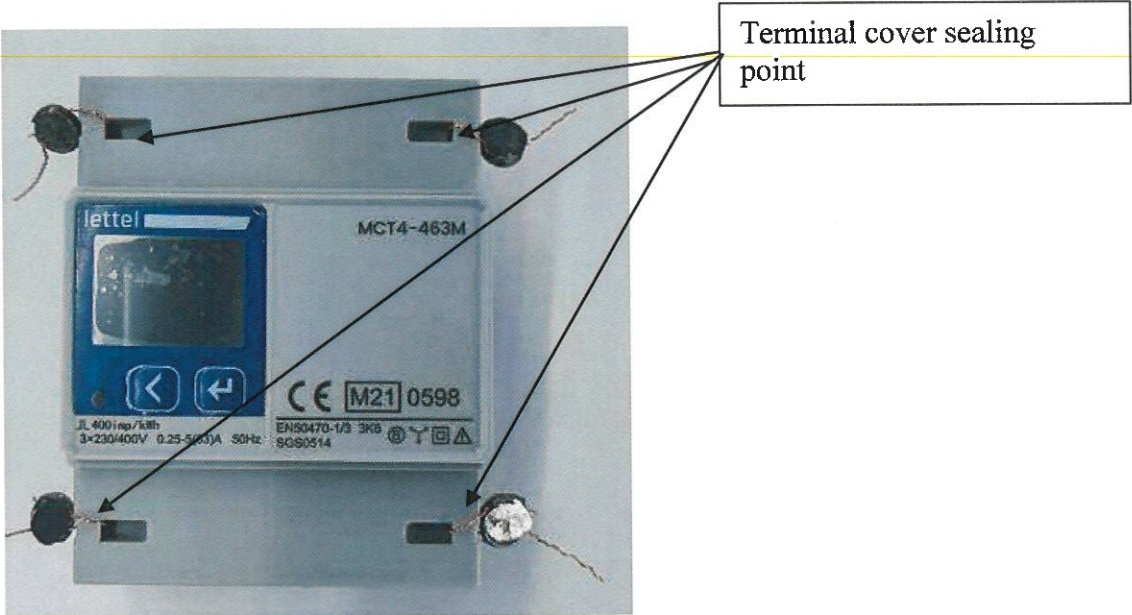
	<b>EU-Type Examination Certificate Number:</b>	
	<b>0120/SGS0514</b>	
	Issue Number: 1	Dated: 21 September 2021

## 1. Technical Data

<b>Manufacturer</b>	Lettel
<b>Meter Type</b>	MCT4-463M; MCT4-463TM
<b>Voltage Rating (<math>U_n</math>)</b>	230V
<b>Current Rating (<math>I_{min} - I_{ref} (I_{max})</math>)</b>	0.25-5(63)A
<b>Frequency (<math>F_n</math>)</b>	50Hz
<b>Active Accuracy Class (<math>kWh</math>)</b>	A or B ( $kWh$ )
<b>Type of circuit</b>	3p4w
<b>Temperature Range</b>	-25°C to +55°C
<b>Software/ Firmware Version No</b>	DTS4.1071
<b>CRC Checksum</b>	0x1E450267
<b>Identification Location</b>	LCD
<b>Bill Of Materials Number</b>	MCT4-463M : 3760352115025 MCT4-463TM: 3760352115056
<b>IP Rating</b>	IP51
<b>Insulation Protective Class</b>	Class II
<b>LED Pulse Constant</b>	400 imp/ $kWh$
<b>Impulse Voltage Rating</b>	6kV
<b>AC Voltage Rating</b>	4kV
<b>Main Cover Sealing Type</b>	Laser welded
<b>Integrity of meter</b>	Inaccessible without breaking seals
<b>Intended Location of the Meter</b>	Indoor
<b>Type of Register</b>	LCD
<b>Terminal Arrangement(s)</b>	DIN
<b>Location of Manufacturers Address</b>	Associated Documents

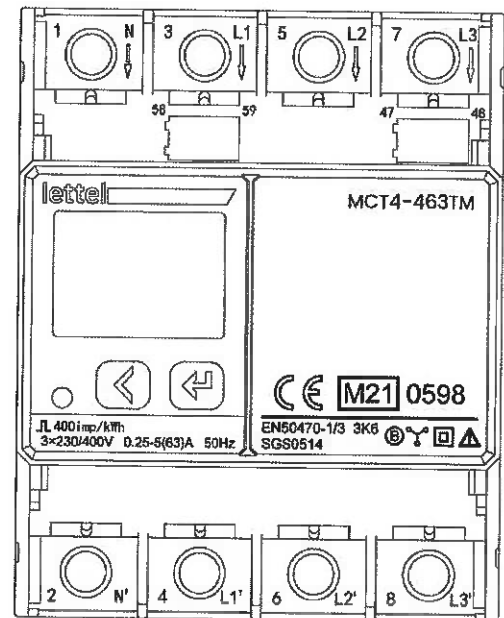
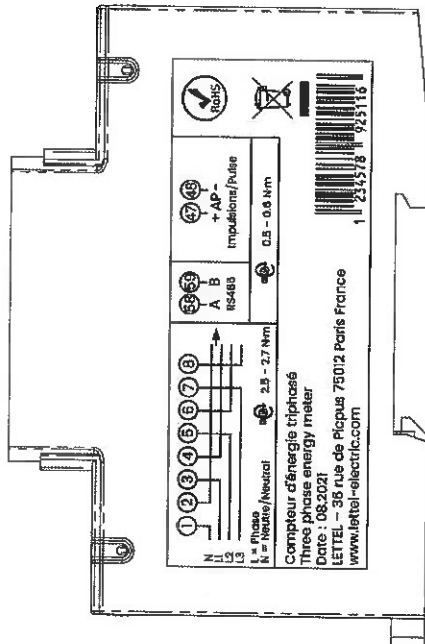
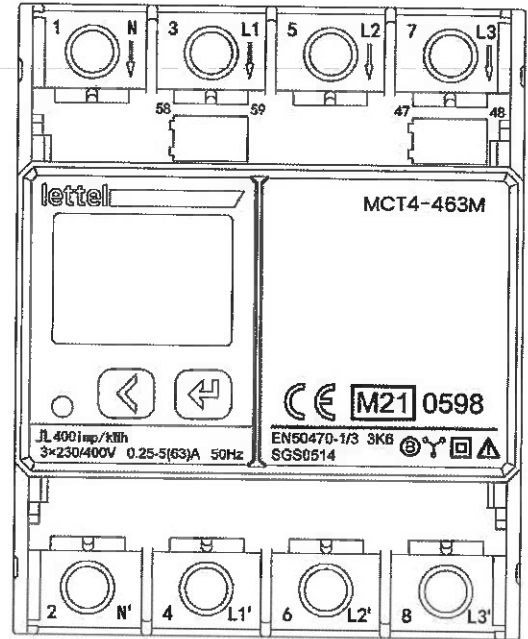
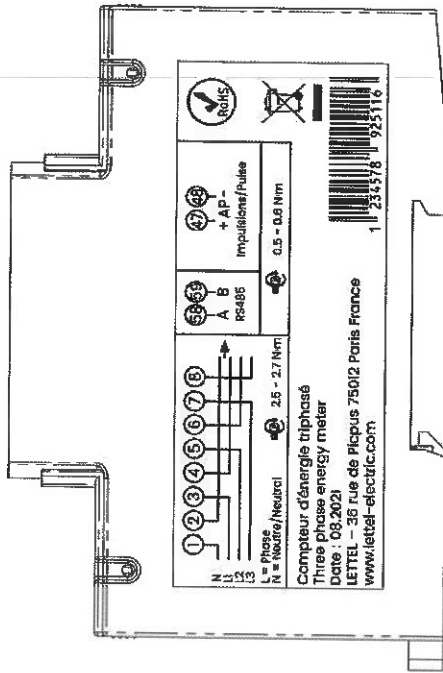
	EU-Type Examination Certificate Number:	
	<b>0120/SGS0514</b>	
	Issue Number: 1	Dated: 21 September 2021

**2. Photograph of Meter and Sealing Plan**



EU-Type Examination Certificate Number:	
<b>0120/SGS0514</b>	
Issue Number: 1	Dated: 21 September 2021

### 3. Examples of Nameplates



<b>EU-Type Examination Certificate Number:</b>	
<b>0120/SGS0514</b>	
Issue Number: 1	Dated: 21 September 2021

#### 4. Calculation of the composite error/ MPE

During the type approval examination the influence factors for temperature, frequency and voltage are determined per load point. The table below represents the sum of the square values per load, determined via the following formula:-

$$\delta e(T, U, f) = \sqrt{(\delta e^2(T, I, \cos\phi) + \delta e^2(U, I, \cos\phi) + \delta e^2(f, I, \cos\phi))}$$

where

- $\delta e(T, I, \cos\phi)$  = Additional error due to variation of the temperature at the same load  
 $\delta e(U, I, \cos\phi)$  = Additional error due to variation of the voltage at the same load  
 $\delta e(f, I, \cos\phi)$  = Additional error due to variation of the frequency at the same load

		<b>Influence Factors for Temperature, Voltage &amp; Frequency</b>					
Current	PF Cos	-25°C	-10°C	5°C	30°C	40°C	55°C
I <sub>min</sub>	1.0	0.14	0.14	0.14	0.14	0.14	0.14
I <sub>tr</sub>	1.0	0.08	0.08	0.08	0.08	0.08	0.08
10I <sub>tr</sub>	1.0	0.02	0.02	0.02	0.02	0.02	0.02
I <sub>max</sub>	1.0	0.03	0.03	0.03	0.03	0.03	0.03
I <sub>tr</sub>	0.5ind	0.14	0.14	0.14	0.14	0.14	0.14
10I <sub>tr</sub>	0.5ind	0.04	0.04	0.04	0.04	0.04	0.04
I <sub>max</sub>	0.5ind	0.14	0.20	0.27	0.34	0.40	0.47
I <sub>tr</sub>	0.8cap	0.09	0.09	0.09	0.09	0.09	0.09
10I <sub>tr</sub>	0.8cap	0.07	0.10	0.14	0.17	0.20	0.24
I <sub>max</sub>	0.8cap	0.13	0.15	0.17	0.18	0.19	0.20

	EU-Type Examination Certificate Number:	
	<b>0120/SGS0514</b>	
	Issue Number: 1	Dated: 21 September 2021

**5. Annex of Variants**

Product Variant Identification Details:

Type Designation	Description of meter
MCT4-463TM	3*230/400V, 0.25–5(63)A, Active Import/Export kWh, Multi-rate
MCT4-463M	3*230/400V, 0.25–5(63)A, Active Import/Export kWh, Single-rate

Modifications to the meter(s) described according to approval No. **0120/SGS0514** must be notified to the issuing body to confirm the meter(s) continuing compliance to the relevant pattern approval standard(s).

	EU-Type Examination Certificate Number:	
	<b>0120/SGS0514</b>	
	Issue Number: 1	Dated: 21 September 2021

## 6. Document Revision History

Issue	Date	Comments
1	21 Sept 2021	Initial Issue

This document is issued by the Company subject to its General Conditions for Certification Services, available on request or accessible at <http://www.sgs.com/en/Terms-and-Conditions.aspx>.

Attention is drawn to the limitation of liability, indemnification and jurisdiction issues defined therein. Any holder of this document is advised that information contained hereon reflects the Company's findings at the time of its intervention only and within the limits of Client's instructions, if any. The Company's sole responsibility is to its Client and this document does not exonerate parties to a transaction from exercising all their rights and obligations under the transaction documents. This document cannot be reproduced except in full, without prior written approval of the Company. Any unauthorized alteration, forgery or falsification of the content or appearance of this document is unlawful and offenders may be prosecuted to the fullest extent of the law.

Unless otherwise stated the results shown in this test report refer only to the sample(s) tested *and such sample(s) are retained for 28 days only.*

**END OF CERTIFICATE**